

Principals Conference

Trinity River Restoration Program

Program Overview



Weaverville, CA
July 13-14, 2005

Conference Objectives

- Celebrate recent accomplishments
- Assess Program's progress and status
- Better understand operational complexities and current costs
- Identify ways to advance the program even with flat or declining federal and state budgets
- Renew commitment by all partners to complete what we've started

Recent, Visible and Substantial Progress



Bridge Construction

May 10-13, 2005
7,000 cfs from Trinity Dam



High flows below
Salt Flat Bridge

Work Still Remains -



Houses and Structures at Risk



Lack of Rearing Habitat

Program Goals - A Reminder

- Restore populations of naturally spawning salmon and steelhead to pre-dam levels.
- ✓ Complete necessary infrastructure modifications to allow implementation of higher peak releases as soon as possible.
- ✓ Create sufficient suitable habitat through achievement of healthy river attributes.
- ✓ Predict, measure, and evaluate progress toward program goals; use to influence management actions.



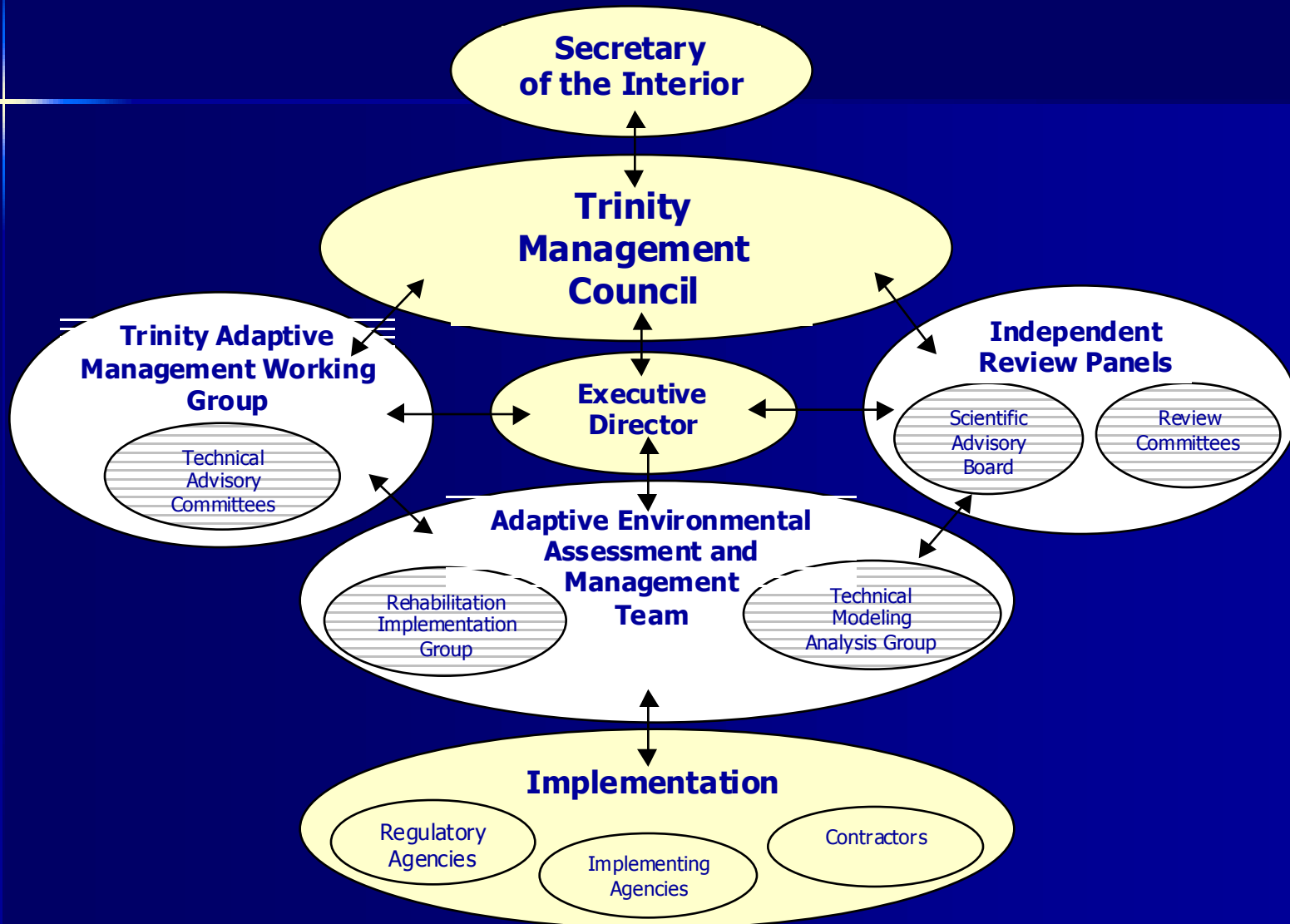
Long Term Perspective

- 1955 - Congress authorized Trinity River Division of the Central Valley Project
- 1964 - Trinity/Lewiston dams completed
- 1981 - Interior Secretary increased flows and initiated Flow Evaluation Study
- 1984 - Congress enacted Trinity River Basin Fish & Wildlife Management Act - to implement salmon restoration
- 1992 - Congress enacted Central Valley Project Improvement Act, established minimum flows of 340,000 AF
- 1999 - Trinity River Flow Study completed, used as Preferred Alternative in EIS/EIR

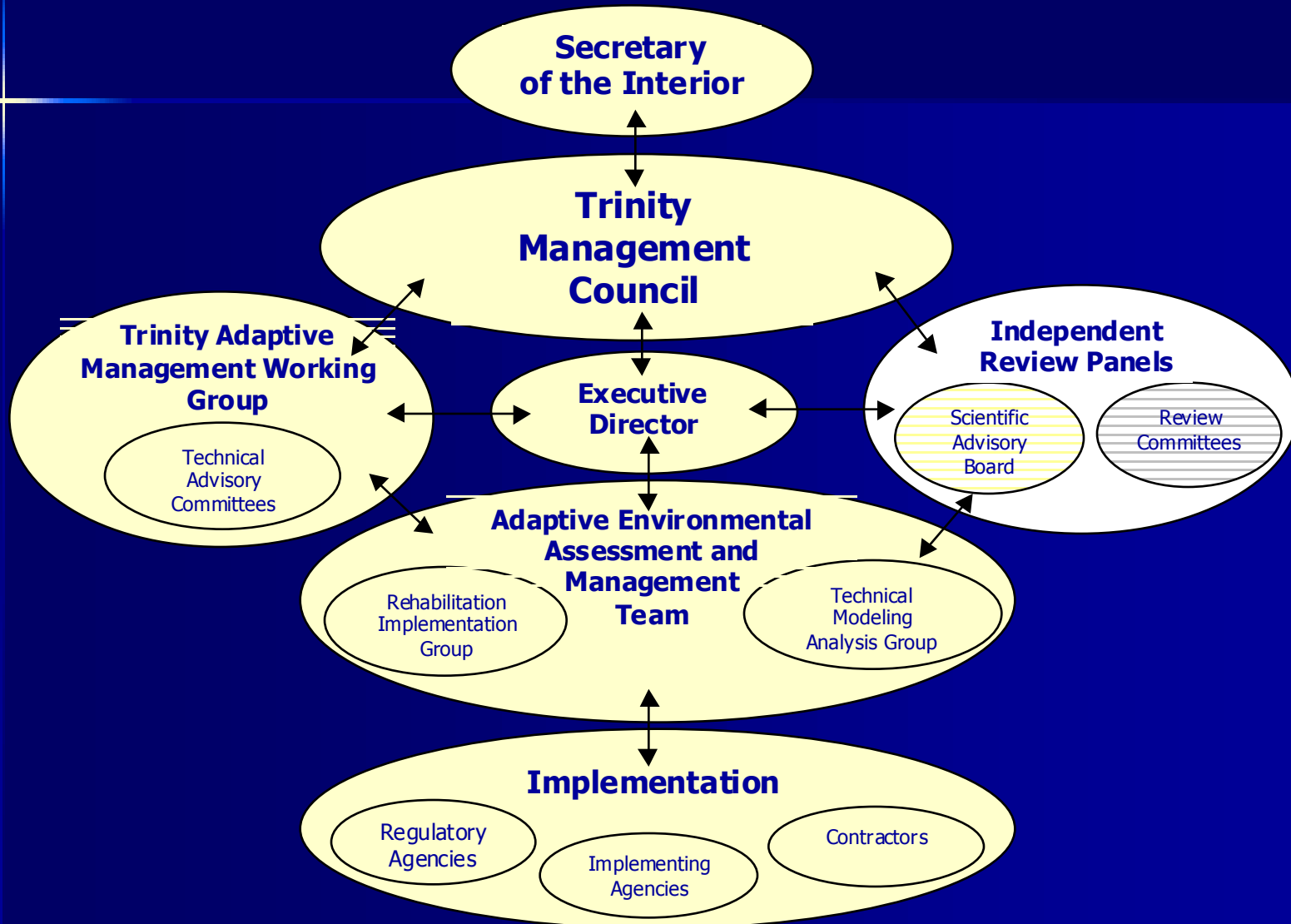
Recent Milestones

- ❑ December 2000 - ROD Signed
- ❑ March 2001 - ROD challenged in court
- ❑ Sept. 2002 - Weaverville office opens
- ❑ July 2003 - FONSI for bridges EA signed
- ❑ March/May 2004 - Bridge contracts awarded
- ❑ Nov. 2004 - 9th Circuit upholds ROD
- ❑ Winter 2004-2005 - Bridges open to traffic
- ❑ May 2005 -7,000 cfs for 4 days

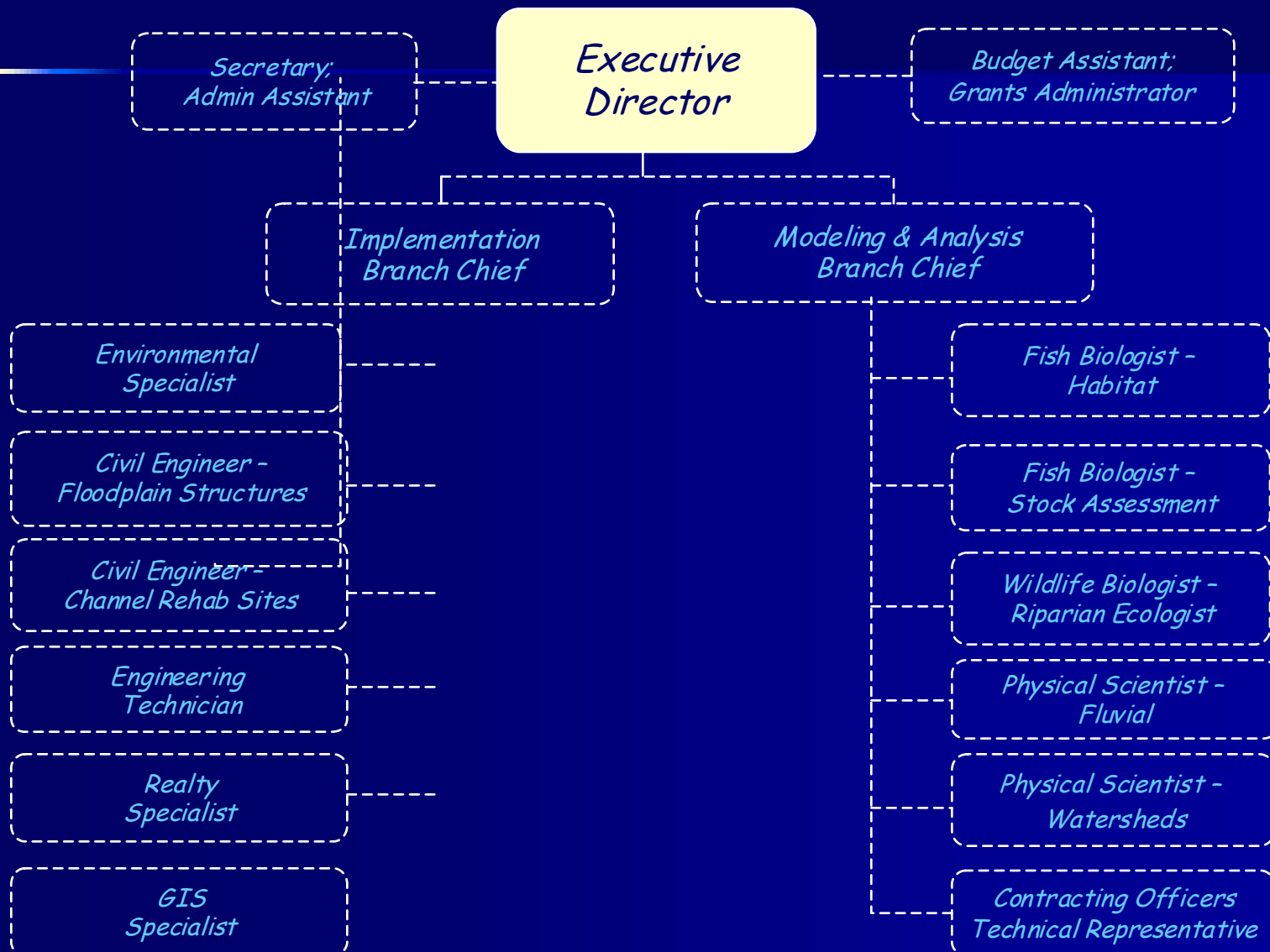
TRRP Organization - October 2001



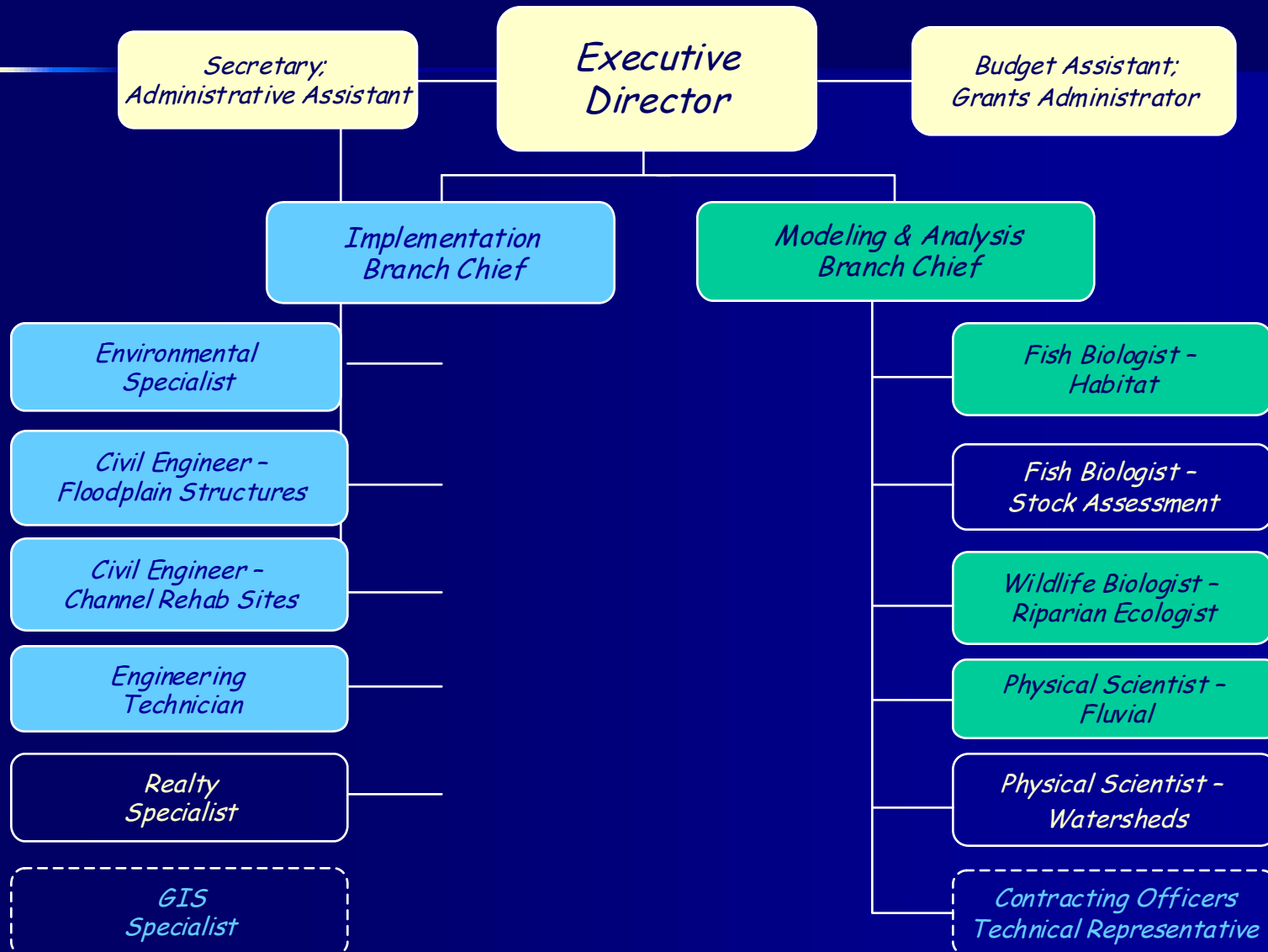
TRRP Organization - July 2005



Program Office - October 2001



Program Office - July 2005



Bridges - October 2001



Poker Bar Bridge

Bridges - July 2005



Poker Bar Bridge

Bridges - October 2001



Biggers Road Bridge

Bridges - July 2005



Biggers Road Bridge

More Water

Water Year

Volume (AF)

2005

647,000

2004

683,300*

2003

486,000*

2002

469,000

2001

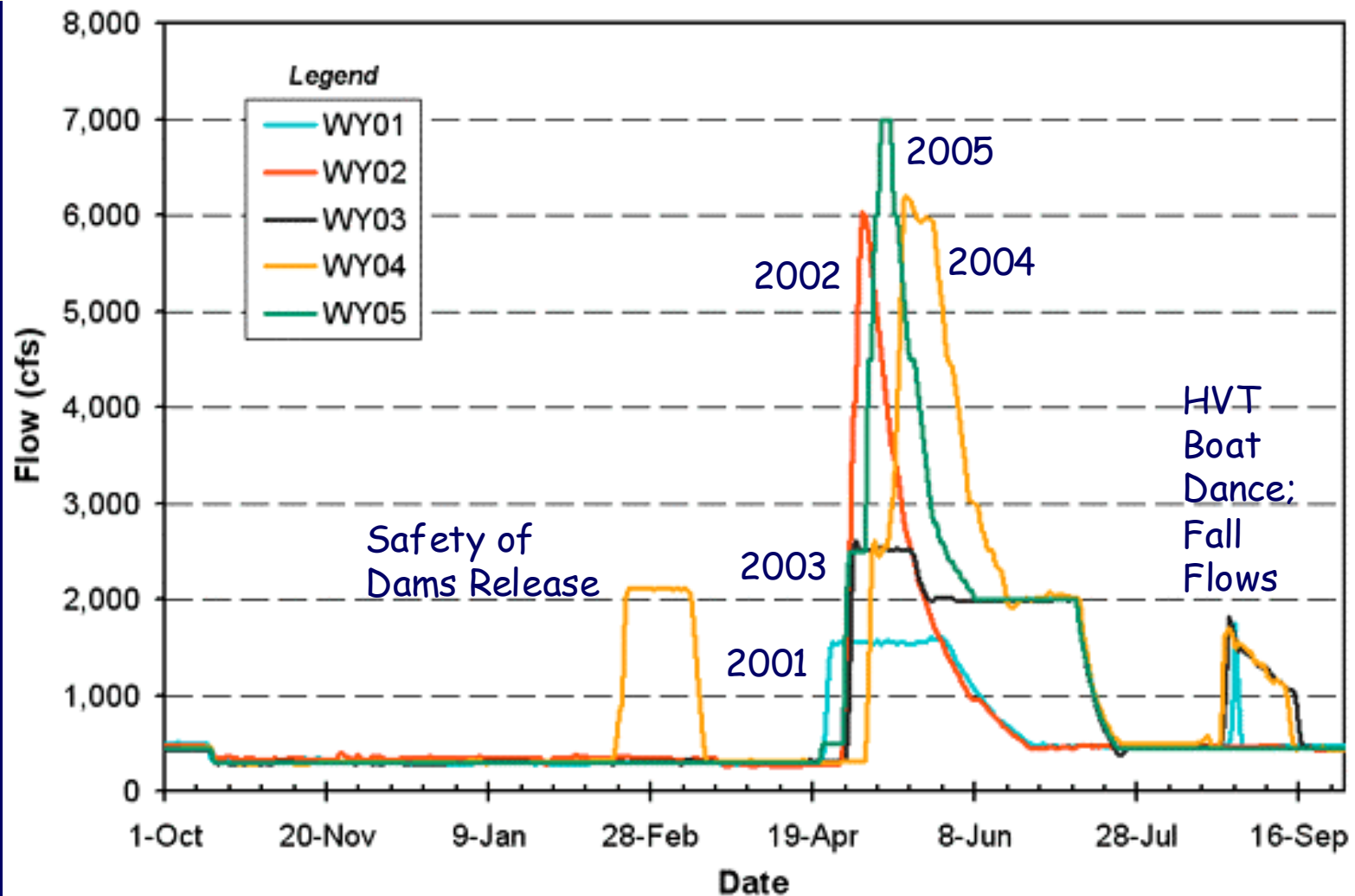
369,000

2000

340,000

*Includes 33,000 AF released in August 2003 and 36,300 AF released in August 2004 to minimize risk of adult salmon mortality in the lower Klamath River.

Achieving Flow Study Objectives



Let's Review - Key Flow Study/ROD Concepts

Managed high-flow releases (up to 11,000 cfs)
+ Removal of berms & vegetation (47 sites)
+ Gravel introductions (up to 60,000 yd³)
+ Fine sediment control (tributaries)

- Restored fluvial processes (rescale)
 - New channel form (40 river miles)
 - More rearing habitat (3-4x)

= Increased salmonid production (2x)

From Policy to Program of Work

ROD Elements (Policies): Implementation Strategies:

1) Release more water.

a) Resolve litigation

b) Modify floodplain structures

2) Create more accessible floodplain (habitat).

a) Remove vegetation and berms

b) Lower elevated floodplains

c) Work with private land owners

3) Introduce coarse sediment.

a) Include with rehab sites

b) Separate placement

From Policy to Program of Work

ROD Elements (Policies): Implementation Strategies:

4) Restrict and reduce amount of fine sediment.

- a) Implement flushing flows
- b) Maintain settling ponds
- c) Source control (tributaries)

5) Predict, evaluate, and modify management actions.

- a) Complete baseline assessments
- b) Develop/use predictive models
- c) Compliance monitoring
- d) Measure progress

Basic Premise of the TRRP Program of Work

RIG 50%	Gravel Augmentation	Gravel Augmentation	Gravel Augmentation	Gravel Augmentation	RIG 20%
	Phase 1 Rehab Sites; Floodplain Structure Mods	Phase 2 Rehab Sites	Follow-up	Update Baseline;	
TMAG 30%	Compliance; Baseline Assessments; Prerequisites	Measure Progress; Evaluate Mgt Actions; Compliance; Prerequisites	Update Baseline; Measure Progress; Evaluate Mgt Actions (flows); Prerequisites	Measure Progress; Evaluate Mgt Actions (flows); Prerequisites	TMAG 60%
	Program Administration (20%)				
	2006-2008	2009-2011	2012-2014	2015-2017	

ROD Cost Estimates

	Year 1	Year 2	Year 3
Bridge Construction	350	5,700	0
Houses/Outbuildings	125	225	0
Channel Rehab Projects	2,150	2,400	2,400
Watershed Restoration	2,000	2,000	2,000
Coarse & Fine Sediments	50	50	355
Objective Specific Monitoring	5,640	5,176	5,176
AEAM Team (Staffing)	2,025	2,025	2,025
Totals	12,340	17,576	11,956

All dollars in thousands; taken from December 2000
ROD/Implementation Plan; not adjusted for inflation

Current Cost Estimates

	Final FY2005	Draft FY2006	Full ROD Implementation		
			FY2007	FY2008	FY2009
Program Administration	2,005	1,886	2,279	2,173	2,199
Rehabilitation Implementation	3,951	4,905	7,862	6,669	6,096
Modeling and Analysis	4,161	3,875	5,247	5,542	5,616
Totals	10,117	10,665	15,388	14,384	13,910

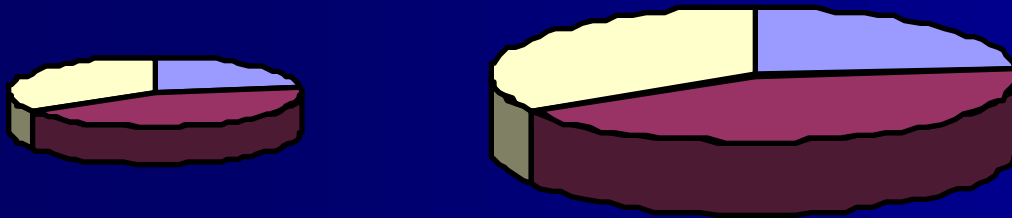
All dollars in thousands; FY2007-2009 figures are best available estimates of a fully-implemented program of work; subject to on-going verification and improvement; funding sources not specified.

Recent Funding Levels

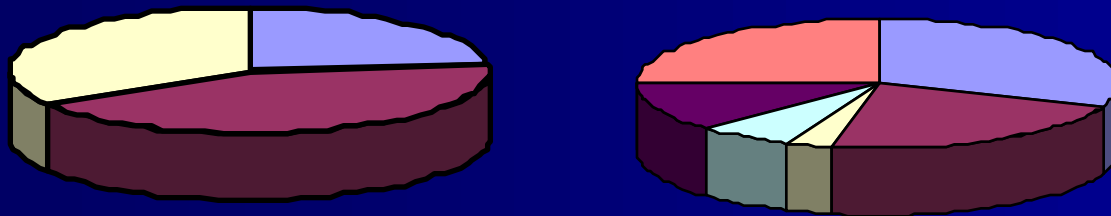
	FY2002	FY2003	FY2004	FY2005	FY2006
Reclamation (Water & Related)	7.0	7.0	6.3	6.0	7.1
CVPIA Restoration Fund	1.1	0	2.0	1.0	2.0
USFWS Appropriations	2.3	2.3	2.1	1.5	1.6
DFG Coastal Salmon Recovery Program	0	0.2	1.9	0	0
Totals	10.4	9.5	12.3	8.5	10.7

All dollars in thousands.

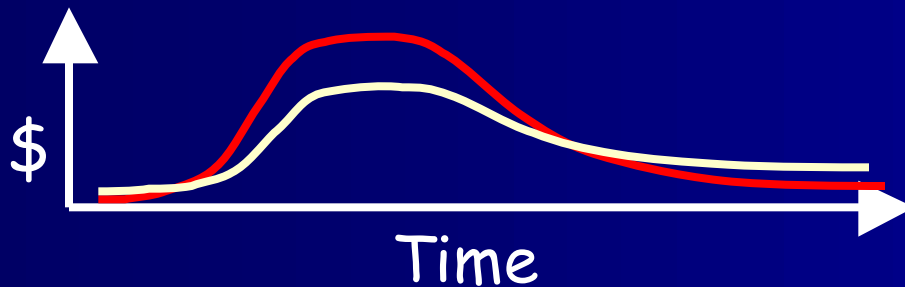
In Conclusion - Three Policy Options



Grow the Pie



Change the Mix



Extend the Time

Questions?

