



Supply Creek Phase 3.5

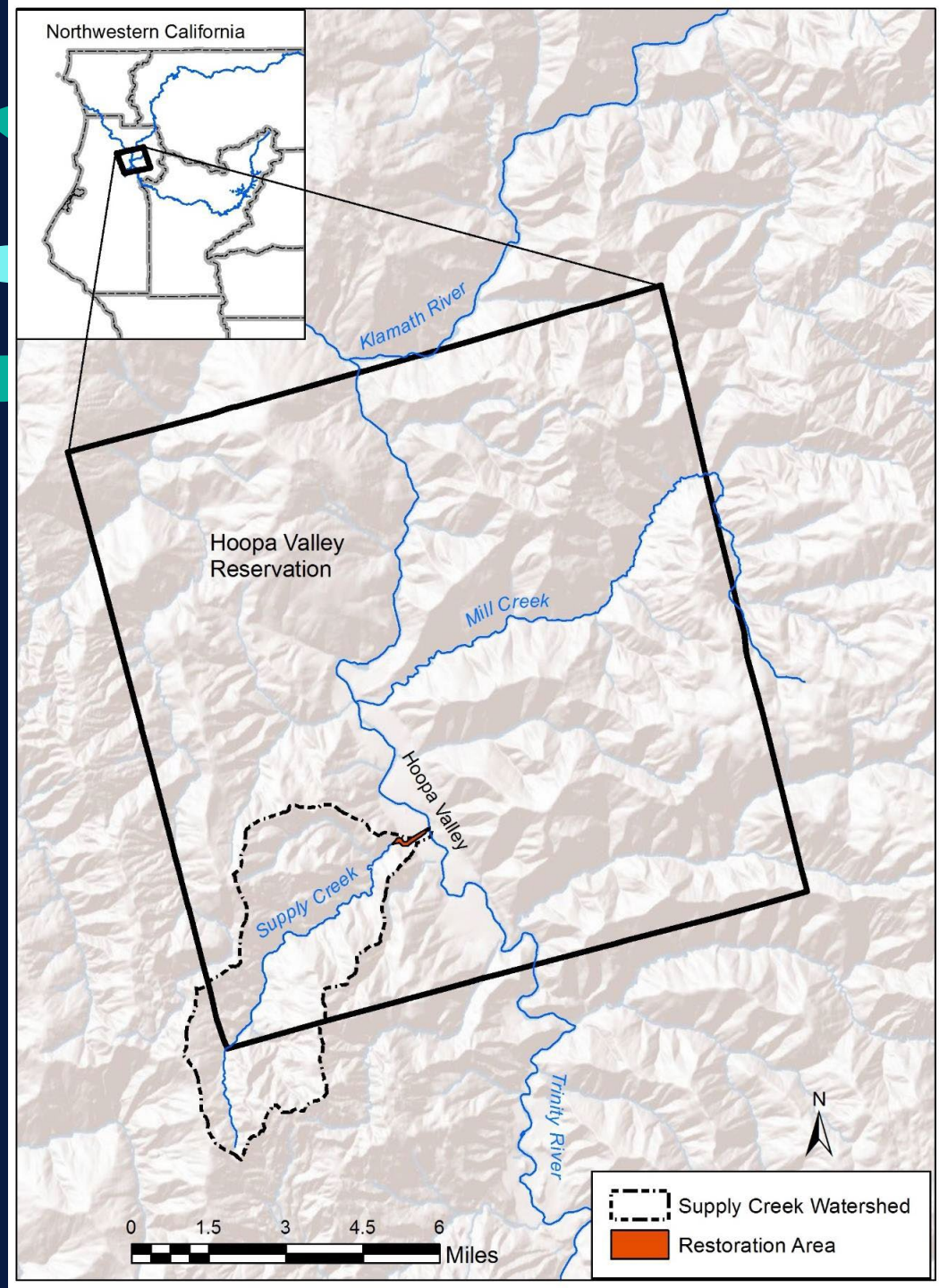
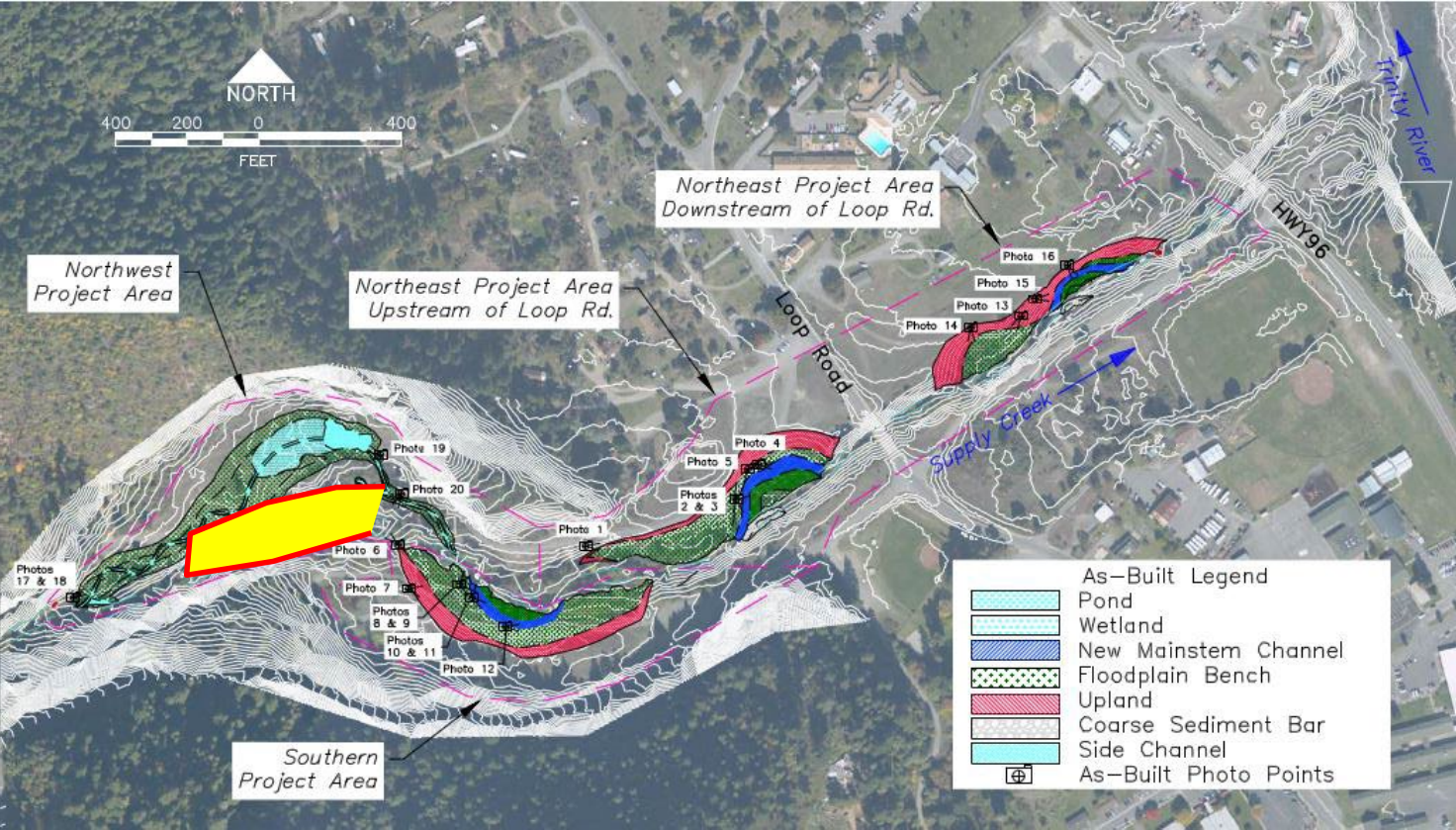
Berm Removal Project

Hoop Valley Tribal Fisheries



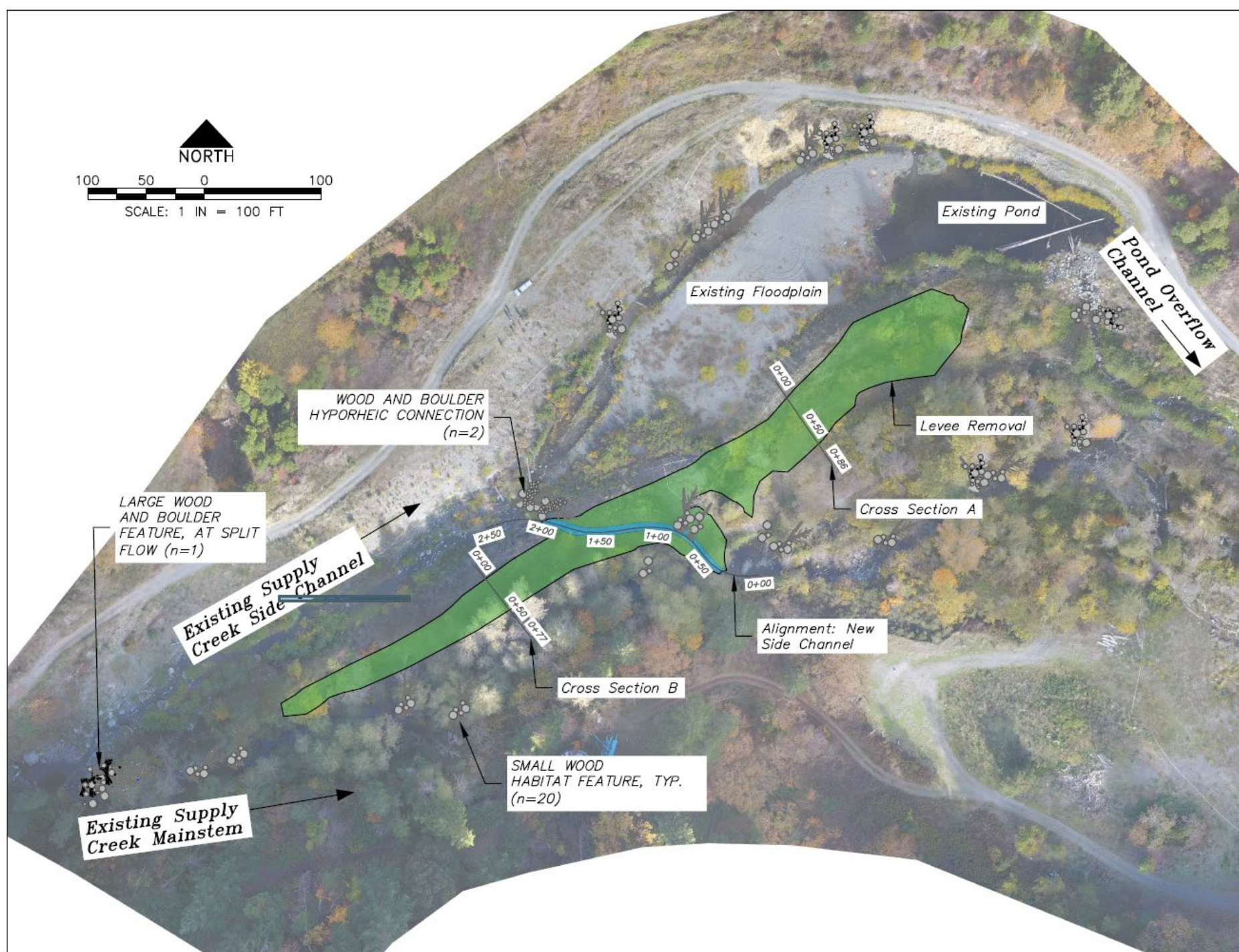
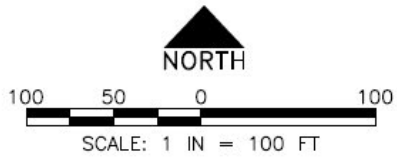
Supply Creek Restoration Timeline

2014 FRGP award
2015-16 Construction
2017 Riparian Planting
2017 Prop 1 Award
2018 Asbestos
2020 TRRP Watershed Grant
2021-22 Construction and Riparian Planting



Actions Taken with Watershed WG funding

- 8k cubic yard berm was removed from the middle of the floodplain
- Reworked split to put more flow into new channel
- Hyporheic connection to Phase 1 pond
- 8 log jams plus individual logs
- 17 Cluster Plantings
- 70 meters of new channel
- Constructed floodplain to inundate at a Q1 event



Berm Removal



Splitting the Creek Flow



Wood Features Installed in the Mainstem



New Channel



Re-Vegetation



Harvested some plants from the very successful and abundant reveg from Phase 1

5 willow trenches & 17 cluster plantings

Primarily Arroyo and Red Willow with some cottonwoods

