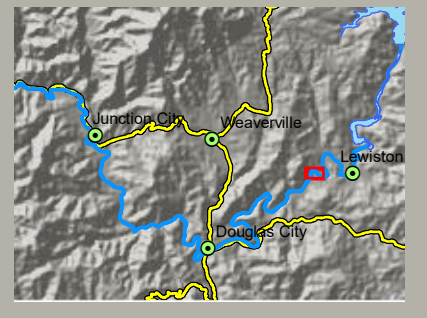


- Parcels**
- Approximate Boundaries*
- Rehabilitation Features**
- Above Ground Placements**
- Access Control
 - Structured Log Jam
- Perennial Inundation**
- Migration
 - Gravel Bed
 - Side Channel
 - Slow Flow
 - Alcove
 - Perennial Wetland
- Ephemeral Inundation**
- Gravel Bar
 - Floodplain
 - Transitional Slope
 - Fill
- Other**
- Upland Fill
 - Landform Naturalization
 - New Permanent Access Road
- Rehabilitation Site**
- Bucktail Site Boundary
- Aerial Photography Aug. 16, 2017**



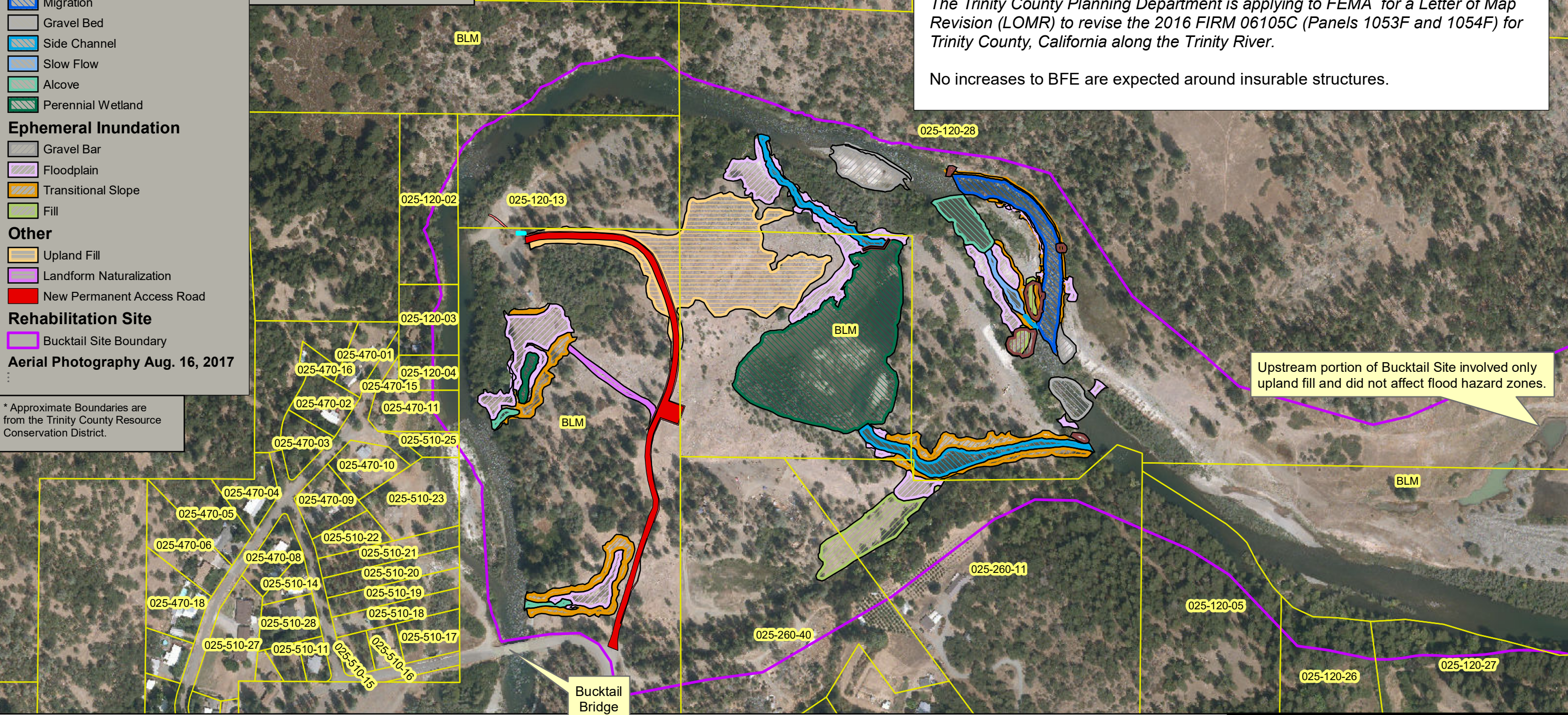
Bucktail Channel Rehabilitation Project and Approximate Parcel Boundaries*

The Trinity River Restoration Program (TRRP) constructed the Bucktail channel rehabilitation project in 2016. The restoration activities in 2016 were not reflected in the new flood hazard zones developed by the Federal Emergency Management Agency (FEMA) that became effective in July, 2016.

The Trinity County Planning Department is applying to FEMA for a Letter of Map Revision (LOMR) to revise the 2016 FIRM 06105C (Panels 1053F and 1054F) for Trinity County, California along the Trinity River.

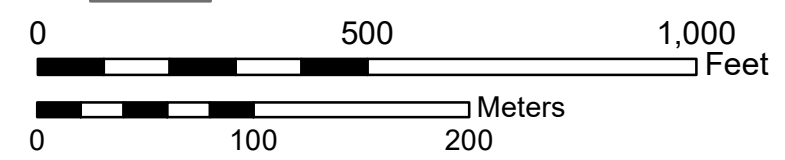
No increases to BFE are expected around insurable structures.

* Approximate Boundaries are from the Trinity County Resource Conservation District.



Upstream portion of Bucktail Site involved only upland fill and did not affect flood hazard zones.

TRINITY RIVER RESTORATION PROGRAM (TRRP)
 U.S. Department of the Interior, Bureau of Reclamation, Mid-Pacific Region
 P.O. Box 1300, 1313 South Main St.
 Weaverville, CA 96093
 Tel: (530) 623-1800; Fax: (530) 623-5944



1:3,500
(when printed 11x17)

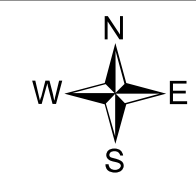


Exhibit A.
Bucktail
2016 Channel Rehabilitation Project
 Completed Project with
 Approximate Parcel Boundaries

V:\Implementation\Rehabilitation_Sites\Bucktail\Env\Comply\FEMA\LOMR\LetterToCommunity\Bucktail_LOMR_Public_A_6_AsBuilt.mxd Created 10/2/2018